



PROFILE OF INNOVATION



The Next Generation Bathroom

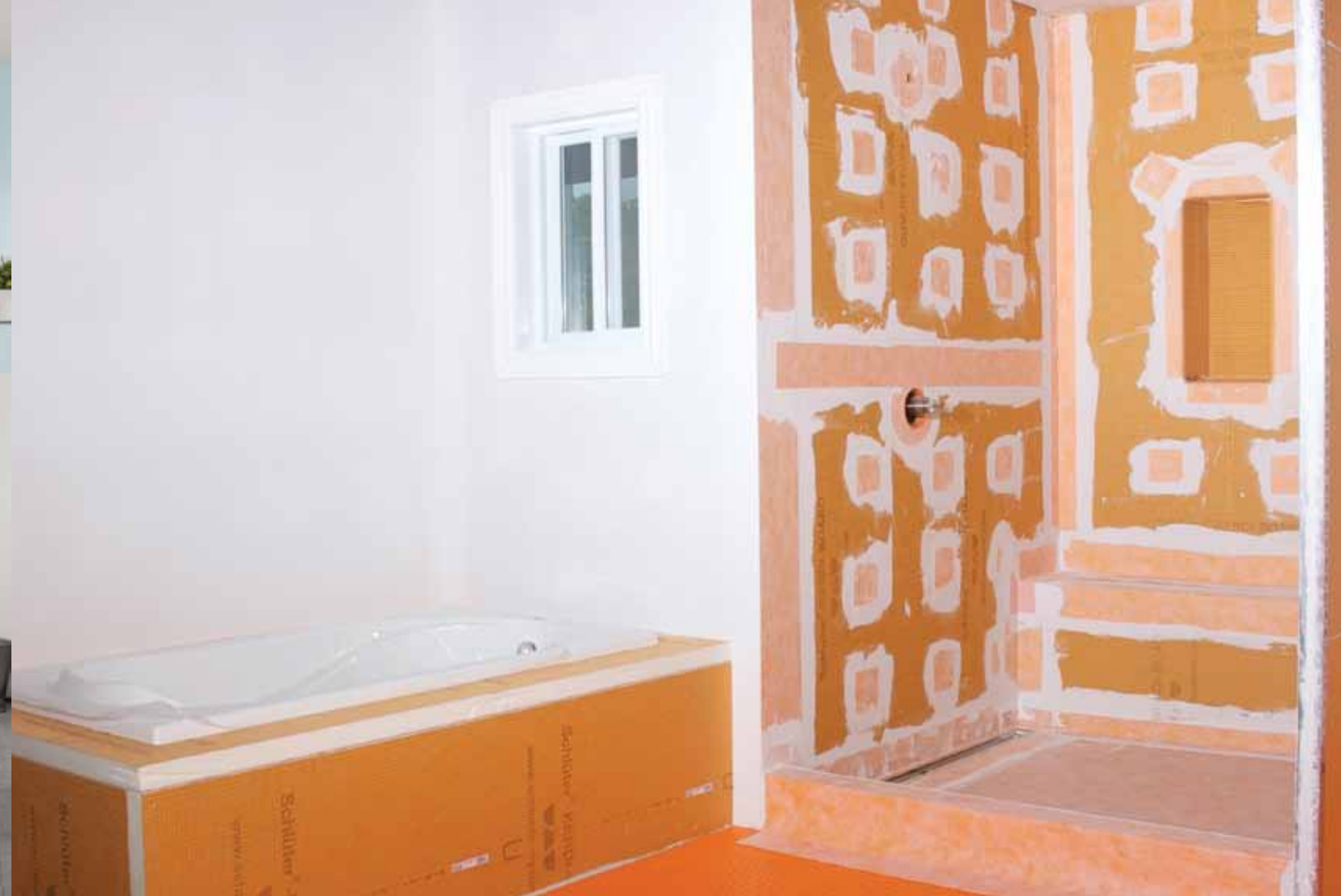


Flexibility in Design

Today's bathroom has transformed from basic, into beautiful. These areas now include large barrier-free spaces, steam showers, and soaking tubs. Built-in seats and benches, along with inset shelves and niches all contribute to creating peaceful, spa-like retreats. Linear drains add a touch of elegance, allowing for single-sloped floors and large-format tiles that carry through from the floor, right in to the shower or wet area of the bath. This flexibility in design is enhanced through the use of tile, which combines hygienic virtues with versatility in décor. The result is glamorous bathrooms that are both durable and highly functional—the theme of the next generation bathroom.

Barrier-free

From a design perspective, open concept bathrooms are quickly becoming a hot trend on the market. With floors sloped to linear drains, shower curbs and shower doors can disappear, creating barrier-free bathrooms. Accessible showers not only create beautiful spaces, they also provide freedom and security to individuals with limited mobility, or homeowners wanting to age in place. This combination of style and accessibility provides greater value to a bathroom, where today's barrier-free bathroom built for its design, will continue to provide homeowners with autonomy in the future.



Utility & Function

Moisture management is the foundation of a successful tiled bathroom. Moisture-sensitive construction materials such as wood framing, plywood or OSB sheathing, and gypsum wallboard must be protected from water and vapor penetration. Wet areas increase the potential for mold growth if effective moisture management is not provided. The key to mold control is moisture control.

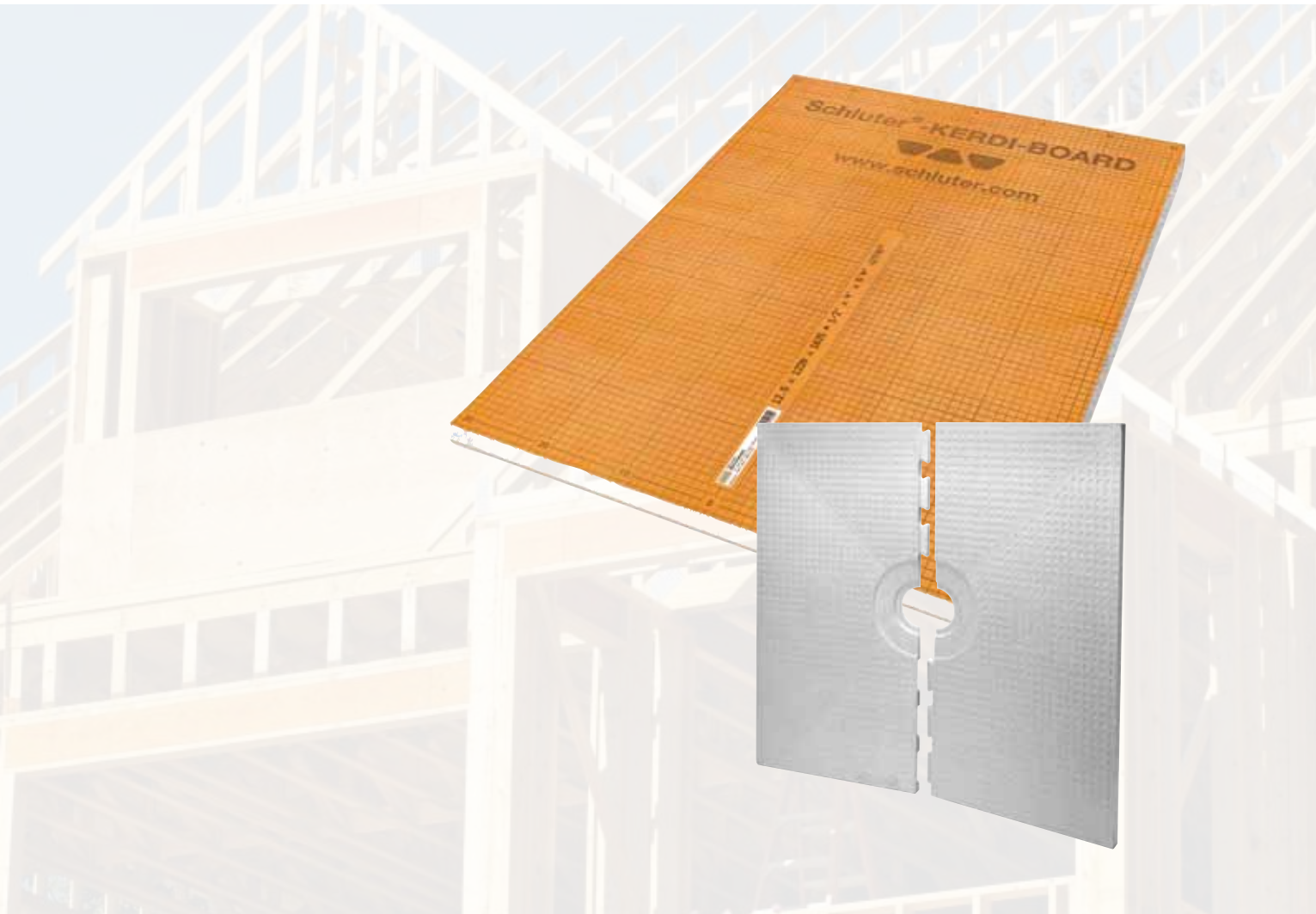
The Schluter®-Shower System is an integrated family of products which together create a fully waterproof and vapor tight enclosure in tiled showers, steam showers, and bathtub surrounds. The system is unique because the waterproofing layer is installed at the top of the assembly, directly behind the tile, rather than below. This eliminates the potential for moisture to seep into the mortar bed or the tile backing on walls, and allows the tile covering to dry between uses.

The Schluter®-Shower System eliminates leaks, reduces the potential for efflorescence and mold growth in the system, and dramatically reduces total installation time to ensure success and make shower installation easier than ever.

In addition to showers and tub surrounds, bathroom floors are also subject to moisture. Schluter®-DITRA is a waterproof, uncoupling membrane that prevents the main cause of cracked tile and grout by absorbing movement stresses from the substrate and ensuring the integrity of tiled surfaces. Simply treat seams and connections to the KERDI waterproofing membrane with KERDI-BAND waterproofing strip to create a completely waterproof bathroom.

Build it up

With KERDI-BOARD, you can customize your bathroom any way you want it. Build your shower, bathtub surround, bench, and countertop to meet your specific design needs. This rigid backing panel is waterproof, lightweight, and ready to tile. Add in any of the prefabricated shower components and your next generation bathroom is ready in a fraction of the time it takes to build a traditional one.



Water proof

The KERDI line of products includes waterproofing membranes for shower walls and bases, as well as specialty pieces for all the hard-to-protect areas, such as pipe protrusions, inside and outside corners, and curbs. With KERDI, you can treat all the areas of your bathroom and ensure the entire room is waterproof.

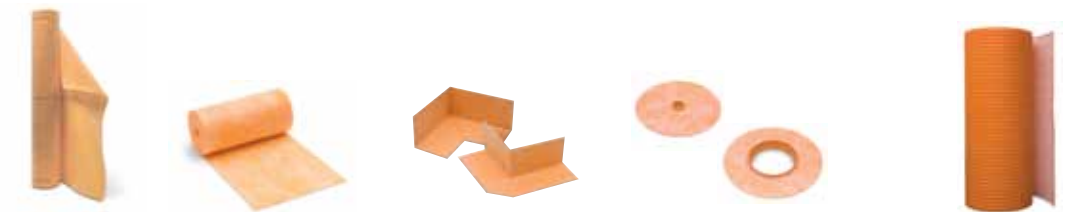


Elements to build from



KERDI-BOARD Building panel
KERDI-BOARD-SN Niches
KERDI-SHOWER-ST Sloped shower tray
KERDI-SHOWER-SC/-SR Shower curb or ramp
KERDI-SHOWER-SB Shower benches

Making it waterproof



KERDI Waterproofing membrane
KERDI-BAND Waterproofing strip
KERECK Inside and outside corner seals
KERDI-SEAL-PS/-MV Pipe and mixing valve seals
DITRA Uncoupling & waterproofing membrane

Drain age

The elegant KERDI-LINE linear drain and KERDI-DRAIN are integral components to the Schluter®-Shower System, both featuring integrated bonding flanges to ensure waterproof confidence and security right down to the drainage system. Install your drain of choice on top of the mortar bed or shower tray, then install the KERDI waterproofing membrane on the walls and shower base.



Big finish

The timeless beauty of ceramic and stone tiles can bring a relaxing spa feeling home. Schluter profiles are suitable for creating hygienic transitions and protecting tile edges in wet areas. Give your shower creations a big finish by adding profiles to shower niches, mosaic inserts, or as decorative accents on tiled walls.



Let it flow!



KERDI-DRAIN
Bonding flange drain



6 grate options



KERDI-LINE
Linear drain



3 grate designs

Trim it out!



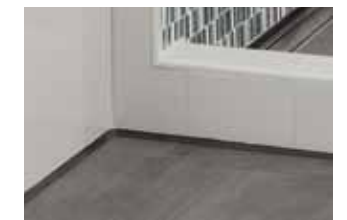
Outside wall edge protection



Niche trim



Countertop profile



Floor/wall transitions





Schluter Systems L.P. • 194 Pleasant Ridge Road, Plattsburgh, NY 12901-5841 • Tel.: 1-800-472-4588 • Fax: 1-800-477-9783
Schluter Systems (Canada) Inc. • 21100 ch. Ste-Marie, Ste-Anne-de-Bellevue, QC H9X 3Y8 • Tel.: 1-800-667-8746 • Fax: 1-877-667-2410
email: info@schluter.com

www.schluter.com